

MAP KEY

Restrooms

Parking

Street

Water

Bert & Ernie

North Side

Burnt Wagon

Horseshoe

Connector

Shangri La

Puma

Playground

East Side

Trapper's Loop

Hickory Ridge Bike Map 2025

Hickory Ridge Parking is located at 16864 225th Ave, Bloomer, WI 54724

Biking Hickory Ridge

SIGNATURE EVENTS WORTH A RETURN TRIP:

- Springfest**
3rd Weekend | May | Chippewa Falls
- Force Fields**
1st Weekend | June | Cadott
- Leinenkugel's Summer Kick Off**
Father's Day Weekend | June | Chippewa Falls
- Summer Jam**
3rd Weekend | June | Wheaton
- Hoofbeat**
4th Weekend | June | Cadott
- Northern Wisconsin State Fair**
2nd Week | July | Chippewa Falls
- Rock Fest**
3rd Weekend | July | Cadott
- Country Jam**
3rd Weekend | July | Wheaton
- OneFest**
1st Weekend | August | Cadott
- Oktoberfest**
3rd Weekend | September | Chippewa Falls
- Christmas Village Opening Day**
Thanksgiving Day | November | Chippewa Falls

PLACES TO STAY:

- AmericInn & Suites**
11 W South Ave | Chippewa Falls
- Cobblestone Hotel & Suites**
100 N Bridge St | Chippewa Falls
- Country Inn & Suites**
1021 W Park Ave | Chippewa Falls
- Hampton Inn & Suites**
12707 30th Ave | Lake Hallie
- Holiday Inn Express & Suites**
2858 26th Ave | Lake Hallie
- Riverstone Suites**
1413 Chippewa Crossing Blvd | Chippewa Falls

SCAN FOR
FULL EVENT
CALENDAR

SCAN FOR
PLACES TO
STAY

TRAILS

Area 178 Mountain Bike Trail

Paved and unpaved trails crisscross through the Riverview Reserve and provide great viewing opportunities of the Xcel Energy Dam. This trail connects to **Duncan Creek Trail** and the **Old Abe State Trail** and is located east of Seymour Cray Blvd.

Duncan Creek Trail

A five mile paved loop through Chippewa Falls ideal for biking and in-line skating. This trail connects to the **Old Abe State Trail** and the **Riverview Reserve Trail**, both northeast of County Highway I. Portions of this trail are shared with street traffic.

Hickory Ridge Trails

The Hickory Ridge Recreation area has 20 miles of off-road trails winding through the beautiful County Forest near Bloomer. These trails are maintained by the Friends of the Hickory Ridge Trail year round for mountain biking, fat tire biking, skiing, and hiking enthusiasts to enjoy. There is no fee to ride, but donations are greatly appreciated.

Old Abe State Trail

WI State Trail Pass Required

The Old Abe State Trail is a paved 20 mile trail connecting Lake Wissota State Park in Chippewa Falls to Brunet Island State Park in Cornell. This old railroad grade has been developed into a multi-use trail for bicyclists, snowmobilers, hikers, **horseback riders**, and in-line skaters. State trail passes are required for all individuals over 16 biking on state trails. Passes can be purchased at the Chippewa Area Visitor Center or other local establishments throughout the county.

PLACES WORTH THE STOP

1

Mill Yard Park

2

Dylan's Dairy

3

MoonRidge Brewing Company

4

Wisconsin Veteran Farm & Winery

5

Just N Tyme Cafe

6

Jim Falls Cenex

7

1917 Lake Wissota

8

Caribou Coffee

9

Whirlybird Coffee

10

Chippewa Falls Family Restaurant

11

Leinie Lodge

12

Olson's Ice Cream

13

Bridge Street Brew

14

Market on River

For information on local attractions, lodging, shopping and dining, contact:

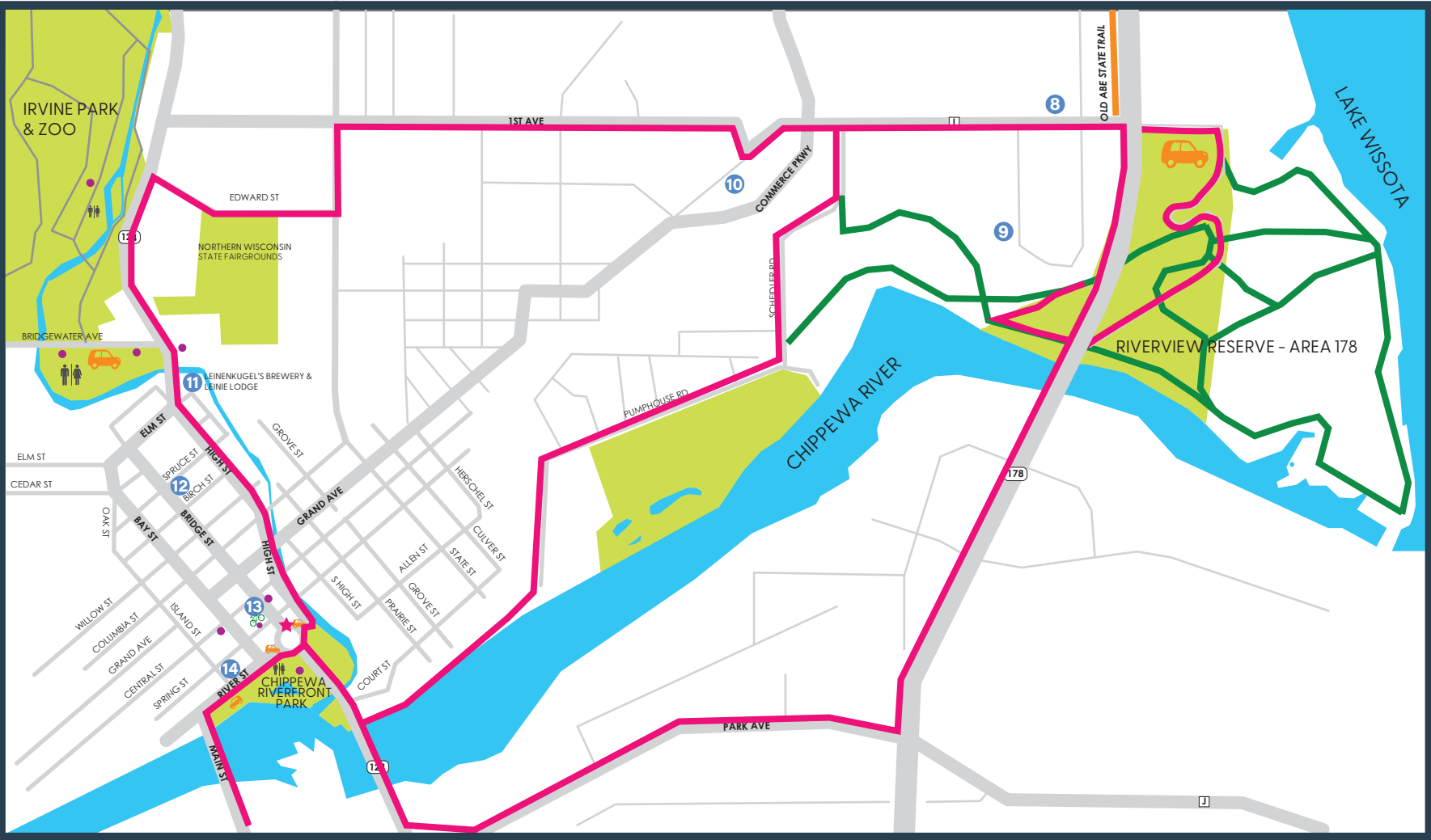
GO Chippewa County
1 N Bridge Street, Chippewa Falls, WI
715-723-0331
gochippewacounty.com

Biking

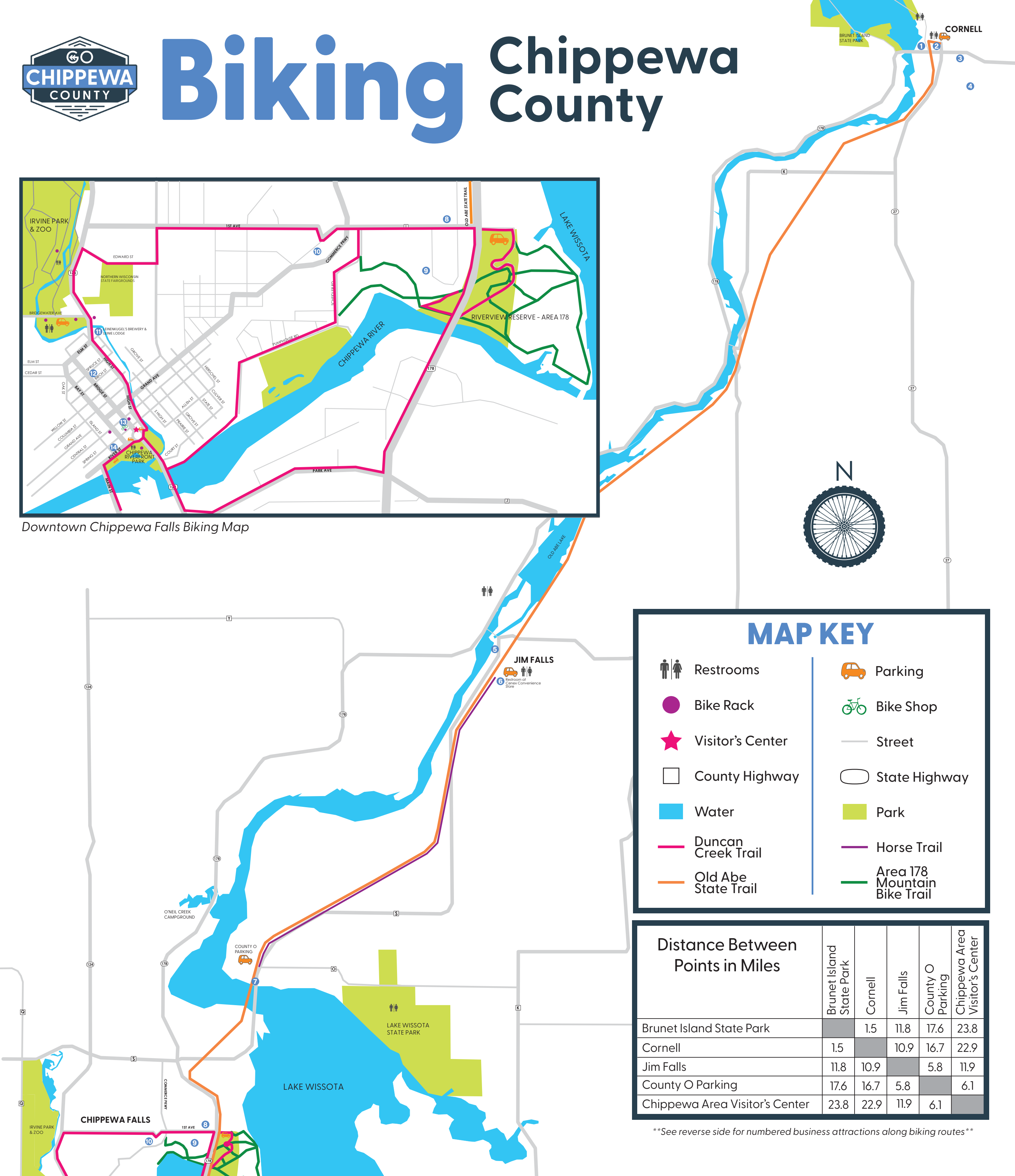
Chippewa Falls + Chippewa County



Biking Chippewa County



Downtown Chippewa Falls Biking Map



MAP KEY

Restrooms

Bike Rack

Visitor's Center

County Highway

Water

Duncan Creek Trail

Old Abe State Trail

Parking

Bike Shop

Street

State Highway

Park

Horse Trail

Area 178 Mountain Bike Trail

Distance Between Points in Miles	Brunet Island State Park	Cornell	Jim Falls	County O Parking	Chippewa Area Visitor's Center
Brunet Island State Park		1.5	11.8	17.6	23.8
Cornell	1.5		10.9	16.7	22.9
Jim Falls	11.8	10.9		5.8	11.9
County O Parking	17.6	16.7	5.8		6.1
Chippewa Area Visitor's Center	23.8	22.9	11.9	6.1	

See reverse side for numbered business attractions along biking routes